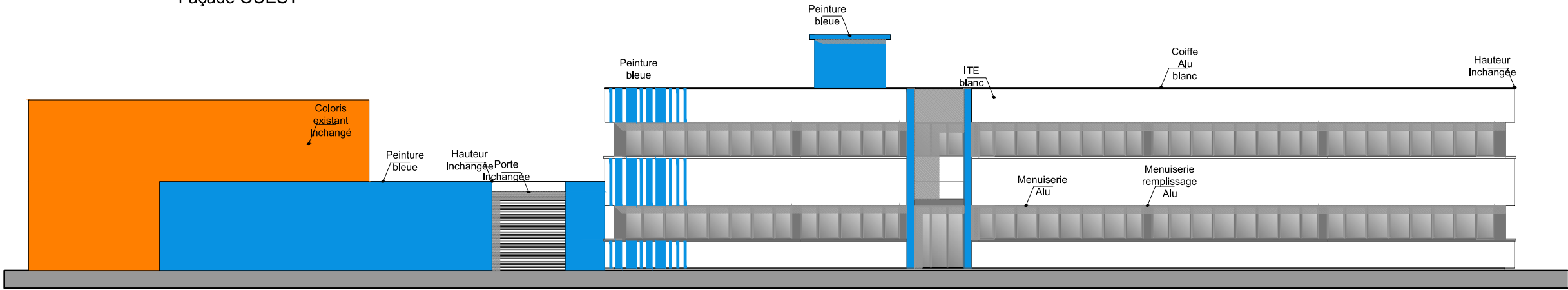
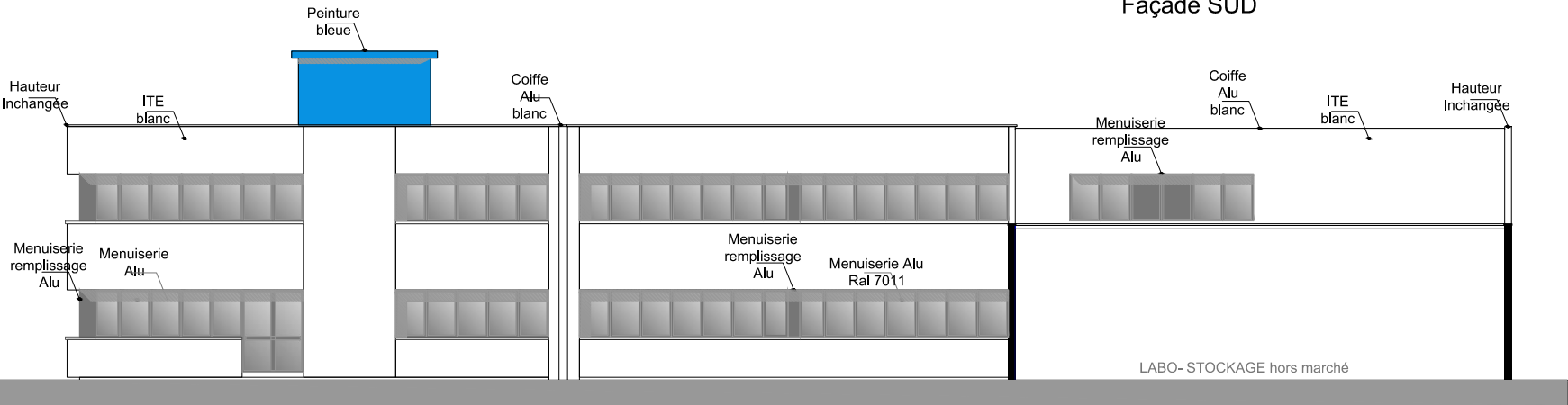


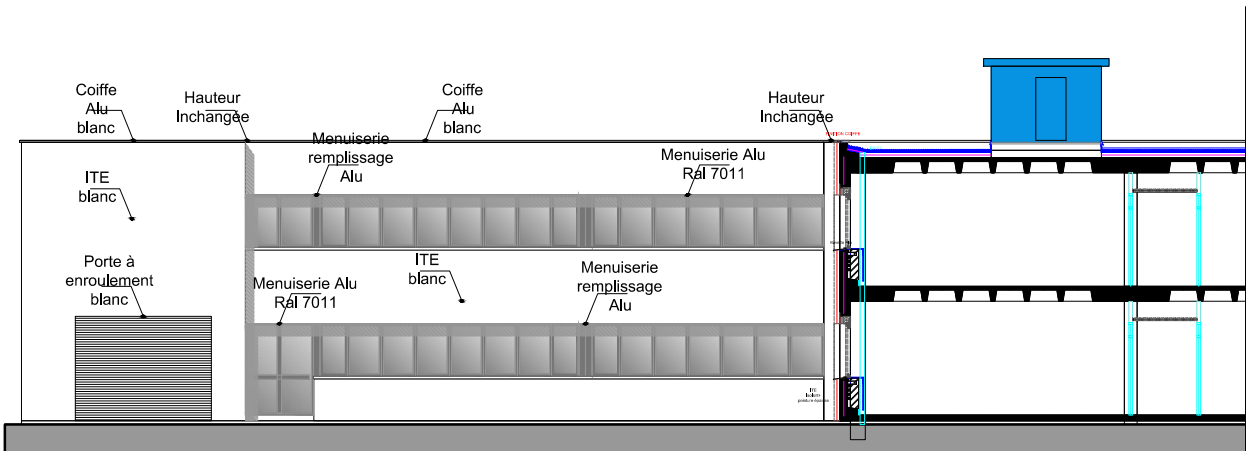
Façade OUEST



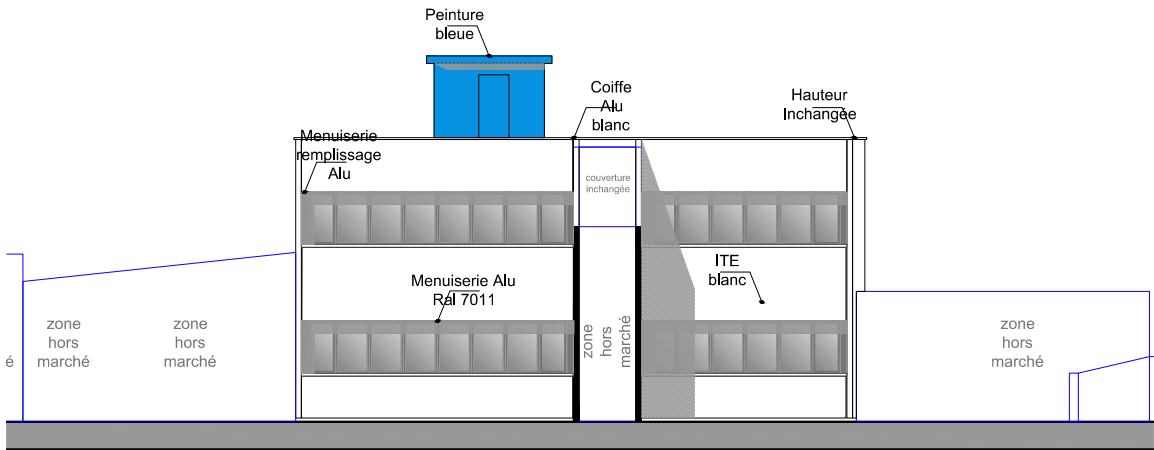
Façade SUD





Façade EST



Façade Nord



Façade NORD

FORMAT A3	MAITRE D'OEUVRE SIXIEME RUE 9 Bd Georges Mandel 44200 NANTES T. 02 40 75 50 56	  UNIVERSITE GUSTAVE EIFFEL Route des Ponts et Chaussées 44340 BOUGUENAIS	Projet de MODIFICATION DE FACADES	DOCUMENT	DOSSIER	N° PIECE
					DP	DP 4
					FACADES PROJET BATIMENT BOUGUER	